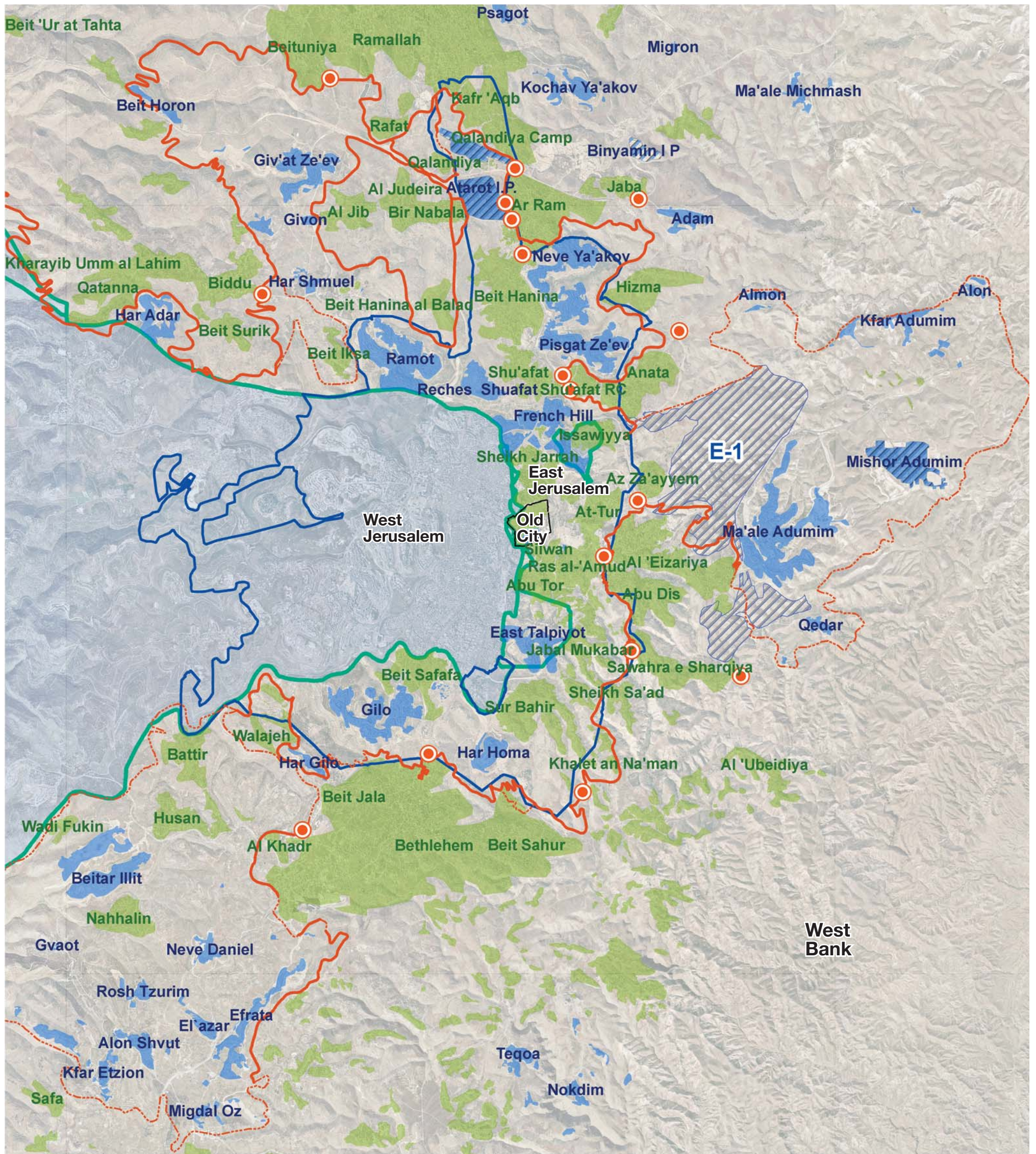












Jerusalem and its Environs

The map displays the key geographic and demographic realities "on-the-ground" which impact on crisis management and conflict resolution in Jerusalem and its environs.

Scale 1:100,000 



-  Green Line
-  Old City
-  Municipal Boundary
-  Barrier - Completed
-  Route of the Barrier - Planned
-  Checkpoint/ Terminal
-  Palestinian Built-up Area
-  Israeli Built-up area Beyond the Green Line
-  Industrial Park
-  E-1 Master Plan

القدس الدنيوية
ירושלים דלמטה
Terrestrial Jerusalem

Terrestrial Jerusalem ("TJ") is an Israeli non-profit organization devoted to the illumination of Israeli-Palestinian relations in Jerusalem. TJ delivers pertinent information, maps and analyses to stakeholders in Israel and the international community, towards the goal of upgrading the quality of the decision-making processes relating to Jerusalem, its current management and its future political status.

For more information: www.T-J.org.il

Historical Borders

The maps of Jerusalem's Historical Borders schematically delineate the political boundaries of Jerusalem, **de facto and de jure**, since the end of Ottoman rule in 1918 until today.

British mandate (Pre-1948)



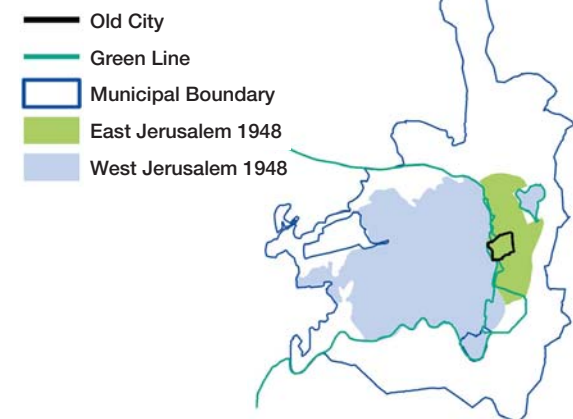
Corpus Separatum (December 1948)



Divided Jerusalem (1949-1967)



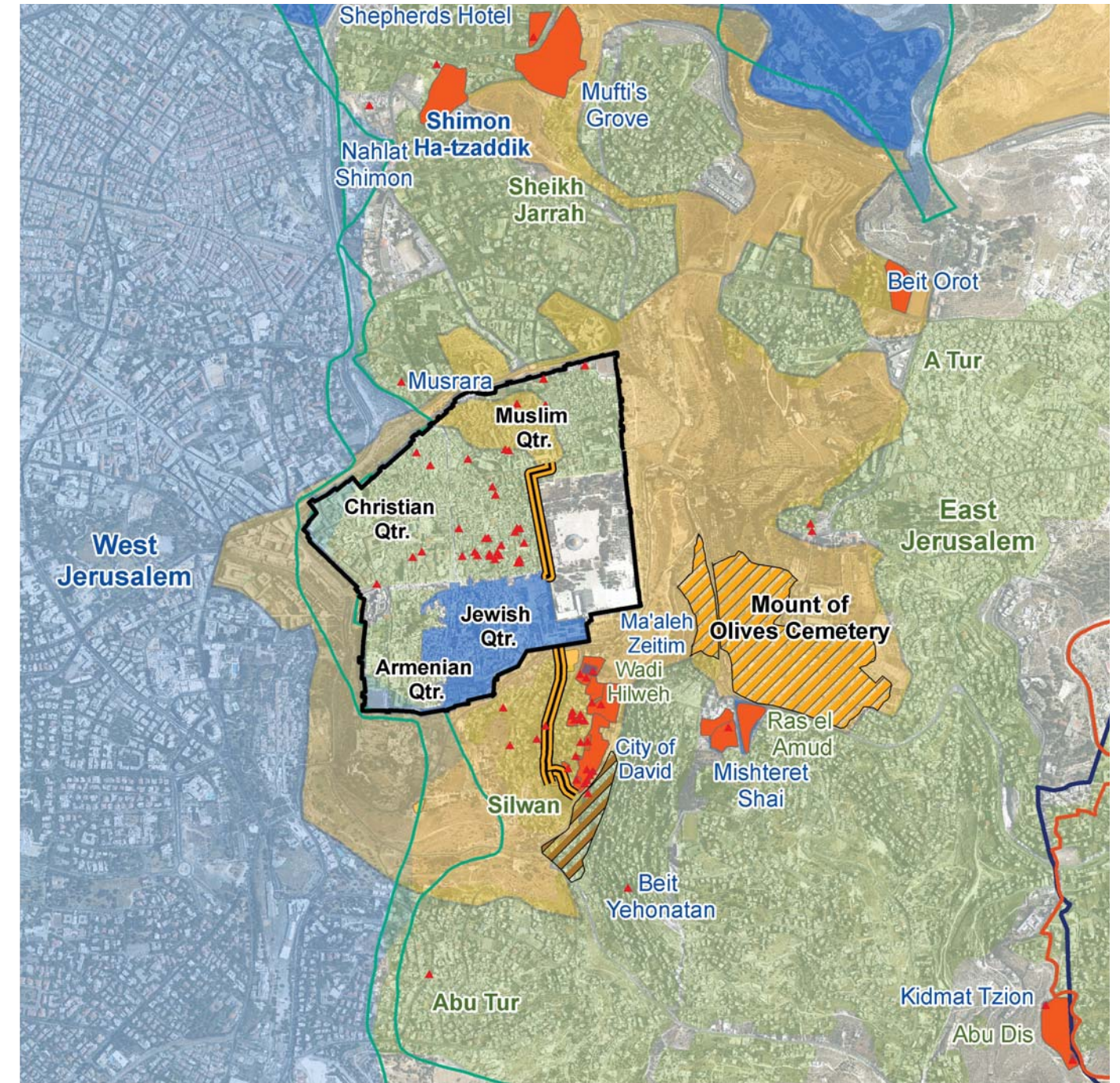
"United Jerusalem" (Post-1967)



The Old City and its Environs

With the Old City and its immediate environs becoming in recent years the principle arena of contention between Israelis and Palestinians in Jerusalem, this map displays the major sites of the current conflict.

Scale 1:20,000



- Green Line
- Old City
- Municipal Boundary
- Barrier
- Palestinian Built-up Area
- Israeli Built-up area Beyond the Green Line
- Existing/ Planned Settlement Complex
- Settler House
- Historic Basin Government Project
- Tunnel
- Bustan Demolitions
- Mount of Olives Cemetery

Contact Information

Daniel Seidemann
E-mail: dseidemann@t-j.org.il
Tel: 972-2-6231471
Fax: 972-2-6246371

Produced by SAYA in cooperation with TJ
Website: www.sayarch.com
Graphic consultant: Harel Schreiber
20 June, 2011